

**All the tables and graphs were created by using the election result forms that were available on the ECP website till 9th August 2024.**

**Table 1: Distribution of the polling stations in NA-128 across 5 provincial associated constituencies (No.)**

	NA-128	PP-156	PP-161	PP-169	PP-170	PP-171
<b>Polling Stations shared</b>	433	66	70	128	108	61

**Table 2: Registered and polled votes in NA-128 and the associated PPs**

Category	NA-128	PP-156, PP-161, PP-169, PP-170, PP-171	Variance
<b>Registered Votes (433 Polling Stations)</b>	678,139	678,139	0
<b>Polled Votes (No.)</b>	381,182	298,824	82,358
<b>Polled Votes (%)</b>	56%	44%	12%

**Table 3: Distribution of voter turnouts rates at the polling stations in the National Assembly Seats, NA-128**

Turnout range	Polling stations	
	No.	%
<b>91% - 100%</b>	33	8%
<b>81% - 90%</b>	80	18%
<b>71% - 80%</b>	39	9%
<b>61% - 70%</b>	13	3%
<b>51% - 60%</b>	16	4%
<b>1% - 50%</b>	252	58%
<b>Total</b>	<b>433</b>	<b>100%</b>

**Table 4: Distribution of the polling stations according to the range of differences in polled votes where the polled votes in NA-128 are higher than the polled votes in associated PPs**

Range of difference in polled votes	# of Polling Stations	Difference in Polled Votes
<b>1-500</b>	63	20,179
<b>501-1000</b>	102	76,395
<b>1000+</b>	6	6,448

**Table 5: Distribution of number of polling stations with the status of difference in polled votes between the NA-128 and the associated provincial (PP) seats**

Status of differences	NA-128	PP-156	PP-161	PP-169	PP-170	PP-171
Polling stations with no significant difference between NA and PPs	212	41	32	44	64	31
Polling stations with exceptional difference in polled votes between NA and PPs	221	25	38	84	44	30
Polling stations where NA votes are more than the associated PP	171	24	34	47	40	26
Polling stations where the associated PP votes are more than NA	50	1	4	37	4	4

**Table 6: Voting pattern at the polling stations with no significant difference of polled votes between the NA-128 and the associated PPs**

	NA-128	5/PPs*	Variance
Registered Votes (212 Polling Stations)	332,843	332,843	0
Polled Votes	135,788	135,799	-11
% Polled Votes	41%	41%	0%
Used Ballot Papers	135,700	136,363	(663)
% Issued Ballot Papers	41%	41%	0%

\* PP-156, PP-161, PP-169, PP-170, PP-171

**Table 7: Voting pattern at the polling stations with exceptional difference of polled votes between the NA-128 and the associated PPs**

	NA-128	5/PPs*	Variance
Registered Votes (221 Polling Stations)	345,298	345,298	0
Polled Votes	245,394	163,025	82,369
% Polled Votes	71%	47%	24%
Used Ballot Papers (Form-46)	222,643	162,269	60,374
% Issued Ballot Papers	64%	47%	17%

\* PP-156, PP-161, PP-169, PP-170, PP-171

**Table 8: Voting pattern at the polling stations where the polled votes of NA-128 is exceptionally higher than associated PPs**

Category	NA-128	5/PPs*	Variance
Registered Votes (171 Polling Stations)	261,118	261,118	0
Polled Votes	209,753	106,731	103,022
% Polled Votes	80%	41%	39%
Used Ballot Papers (Form-46)	185,663	106,149	79,514
% Issued Ballot Papers	71%	41%	30%
Number of votes secured by Mr. Aun Saqlain Chaudhry	130,940	-	-
Number of votes secured by Mr. Salman Akram Raja	61,955	-	-

\* PP-156, PP-161, PP-169, PP-170, PP-171

**Table 9. Voting pattern at the polling stations where the polled votes of NA-128 and the associated PPs have no significant differences (212 Shared Polling Stations)**

Metric	NA-128	5/PPs*	Difference
Registered Voters	332,843	332,843	0
Polled Votes	135,788	135,799	-11
Average Turnout	40.8%	40.8%	0.0%
Ballot Papers Used	135,700	136,363	-663
Difference Between Polled Votes and Ballot Papers	88	564	-
Number of votes secured by Mr. Aun Saqlain Chaudhry	36,523	-	-
Number of votes secured by Mr. Salman Akram Raja	76,870	-	-

\* PP-156, PP-161, PP-169, PP-170, PP-171

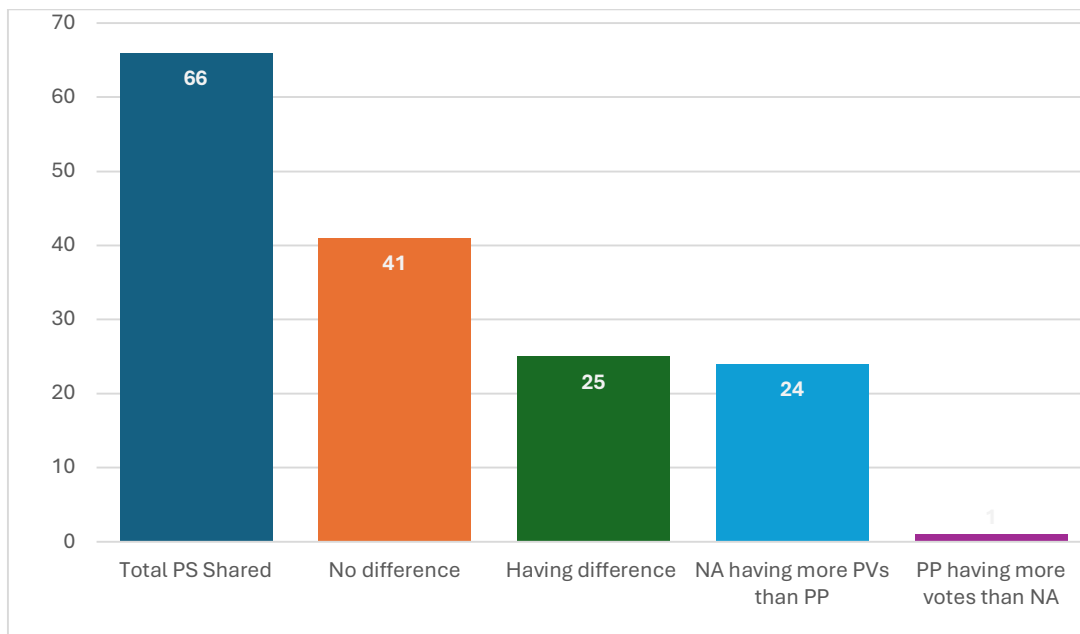
**Table 10: Voting pattern at the polling stations where the polled votes of the associated PPS are exceptionally higher than NA-128**

Category	NA-128	5/PPs	Variance
Registered Votes (50 Polling Stations)	84,178	84,178	0
Polled Votes	35,641	56,294	-20,653
% Polled Votes	42%	67%	-25%
Used Ballot Papers (Form-46)	36,980	56,120	-19,140
% Issued Ballot Papers	44%	67%	-23%

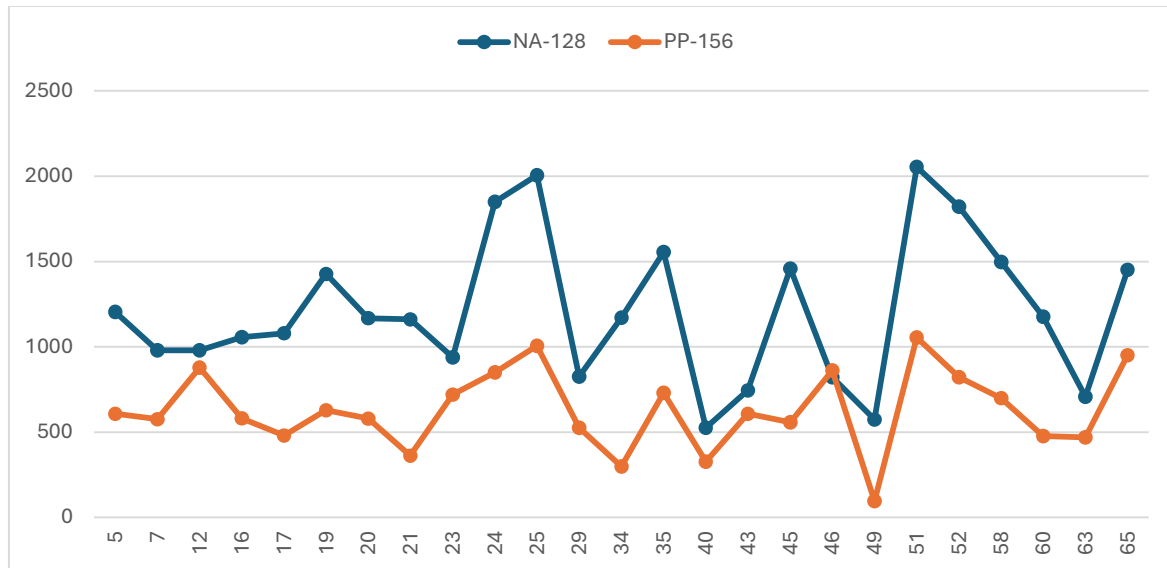
\* PP-156, PP-161, PP-169, PP-170, PP-171

**Analysis of NA-128 & PP-156 Voting Patterns in Shared Polling Stations**

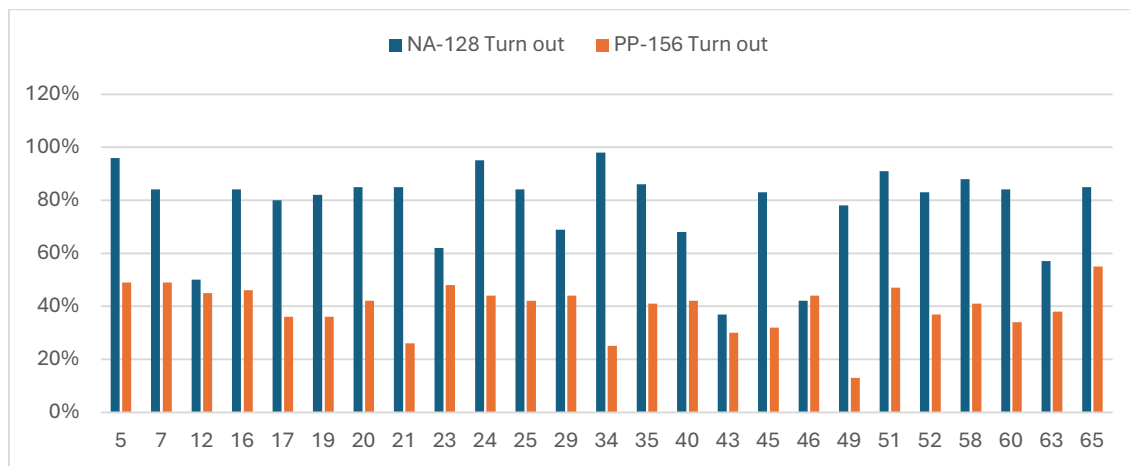
**Figure 1. Polled votes (PVs) fluctuation across polling stations between NA-128 and PP-156 Lahore**



**Figure 2. Graph showing variance in polled votes of same polling stations for NA-128 and PP-156 constituencies.**



**Figure 3. Exceptional differences in the voters' turn outs (%) in the same poling stations shared for NA -128 and PP-156**



**Table 11. Polling Stations Where NA Polled Votes Are Higher than PP (25 Shared Polling Stations)**

Metric	NA-128	PP-156	Difference
Registered Voters	39,268	39,268	0
Polled Votes	30,233	15,735	14,498
Average Turnout	77.0%	40.1%	36.9%
Ballot Papers Used	26,730	15,708	11,022
Difference Between Polled Votes and Ballot Papers used	3,503	27	-
Votes for M. Awn Saqlain	18,063	-	-
Votes for Salman Akram Raja	8,456	-	-

**Table 12. Polling Stations Where NA and PP Polled Votes Are Equal (41 Shared Polling Stations)**

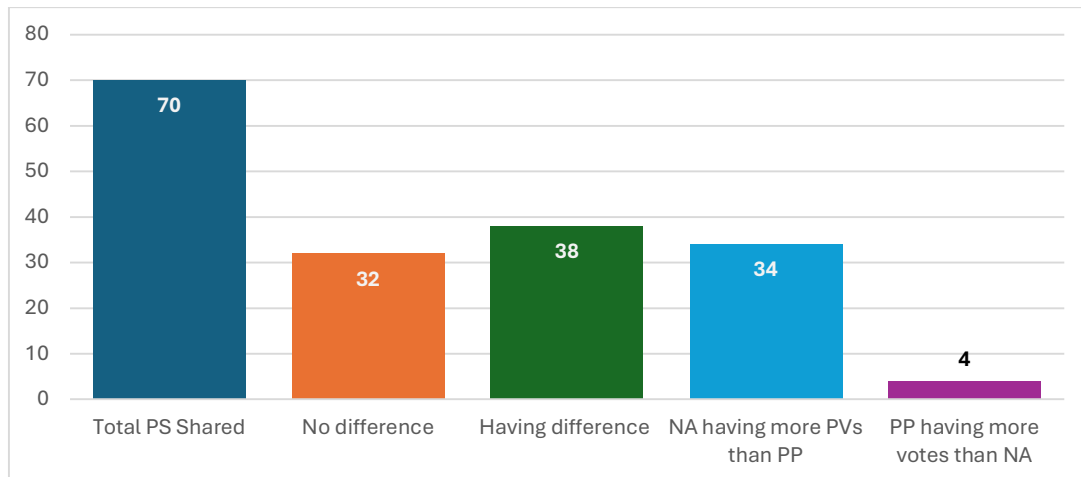
Metric	NA-128	PP-156	Difference
Registered Voters	60,265	60,265	0
Polled Votes	24,261	24,262	-1
Average Turnout	40.3%	40.3%	0.0%
Ballot Papers Used	24,279	24,107	172
Difference Between Polled Votes and Ballot Papers used	18	155	-
Votes for M. Awn Saqlain	5,795	-	-
Votes for Salman Akram Raja	12,173	-	-

**Table 13. Summary of All Shared Polling Stations (66 Shared Polling Stations)**

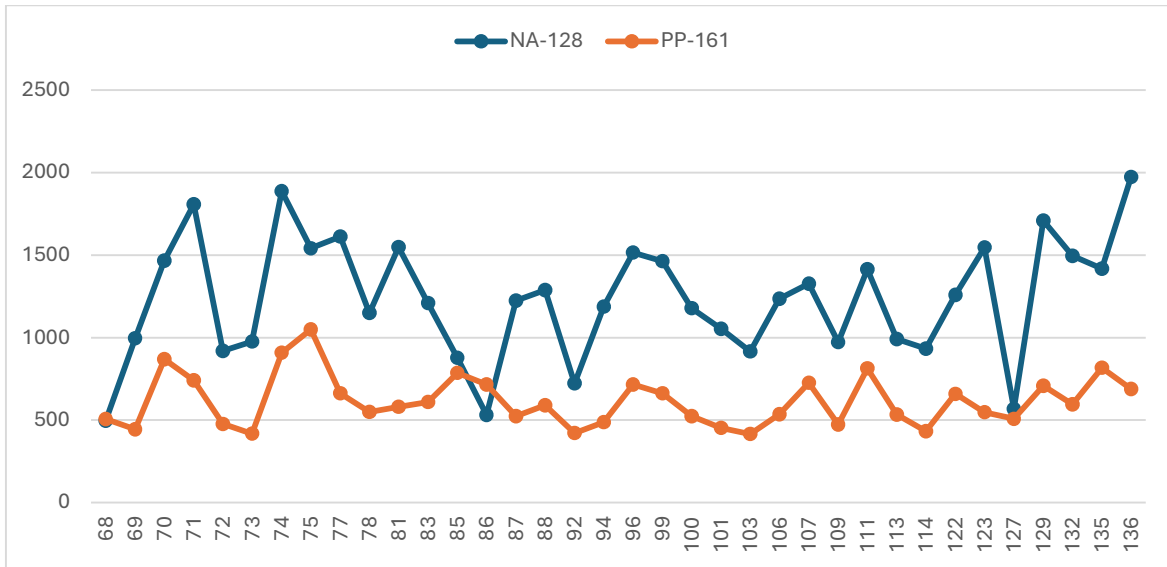
Metric	NA-128	PP-156	Difference
Registered Voters	99,533	99,533	0
Polled Votes	54,494	39,997	14,497
Average Turnout	54.7%	40.2%	14.6%
Ballot Papers Used	51,009	39,815	11,194
Votes for M. Awn Saqlain	23,858	-	-
Votes for Salman Akram Raja	20,629	-	-

**Analysis of NA-128 & PP-161 Voting Patterns in Shared Polling Stations**

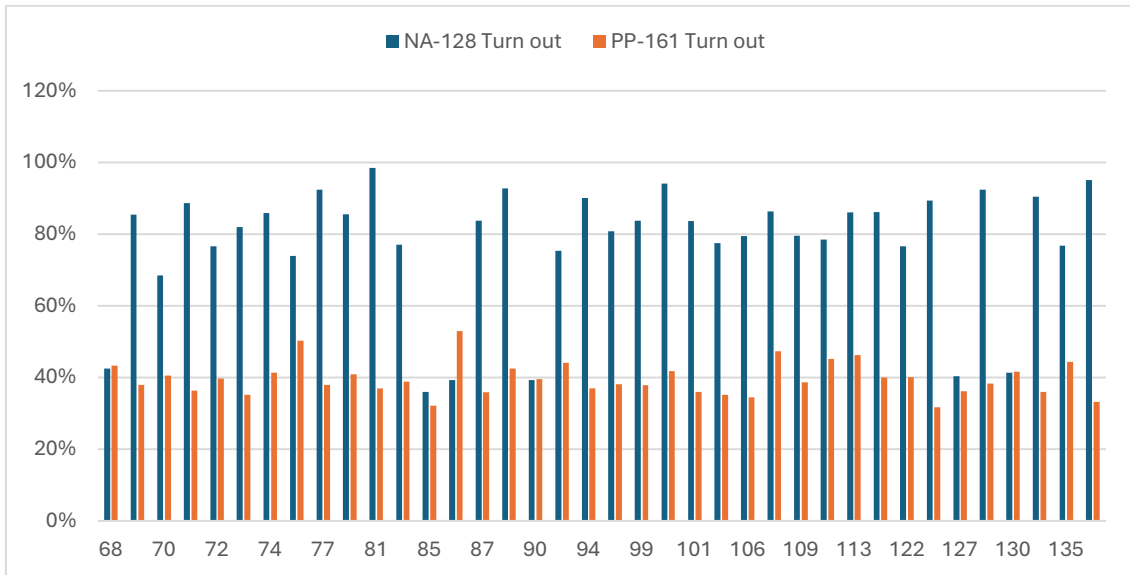
**Figure 4. Polled votes (PVs) fluctuation across polling stations between NA-128 and PP-161 Lahore**



**Figure 5. Graph showing variance in polled votes of same polling stations for NA-128 and PP-161 constituencies.**



**Figure 6. Exceptional differences in the voters' turn outs (%) in the same poling stations shared for NA -128 and PP-161**



**Table 14. Polling Stations Where NA Polled Votes Are Higher than PP (38 Shared Polling Stations)**

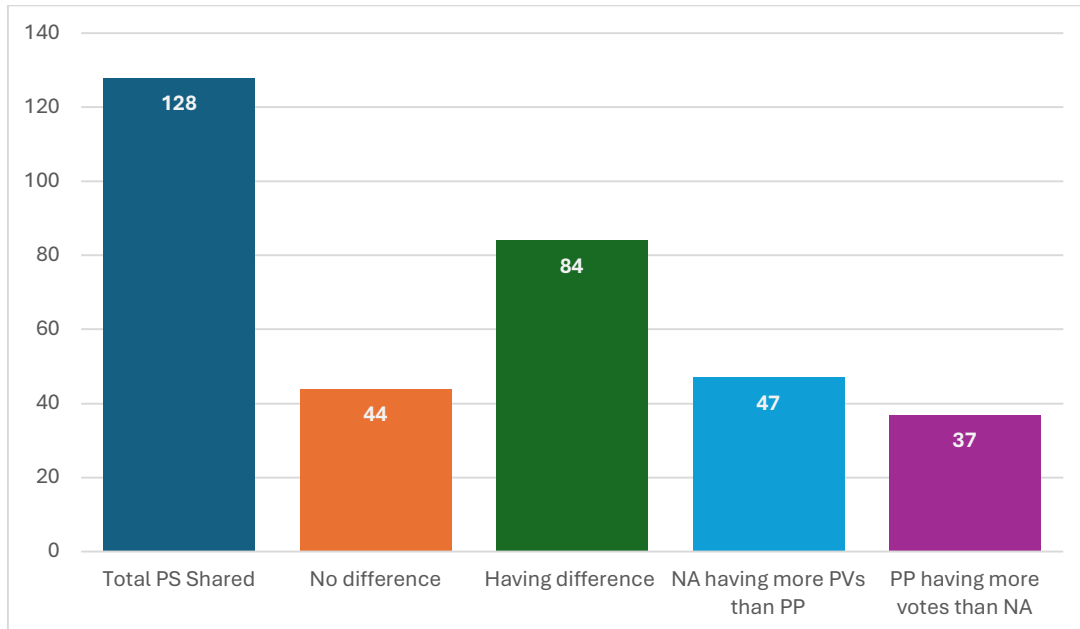
Metric	NA-128	PP-161	Difference
Registered Voters	59,599	59,599	0
Polled Votes	45,778	23,525	22,253
Average Turnout	76.8%	39.5%	37.3%
Ballot Papers Used	40,474	23,496	16,978
Difference Between Polled Votes and Ballot Papers	5,304	29	-
Votes for M. Awn Saqlain	27,228	-	-
Votes for Salman Akram Raja	15,555	-	-

**Table 15. Polling Stations Where NA and PP Polled Votes Are Equal (32 Shared Polling Stations)**

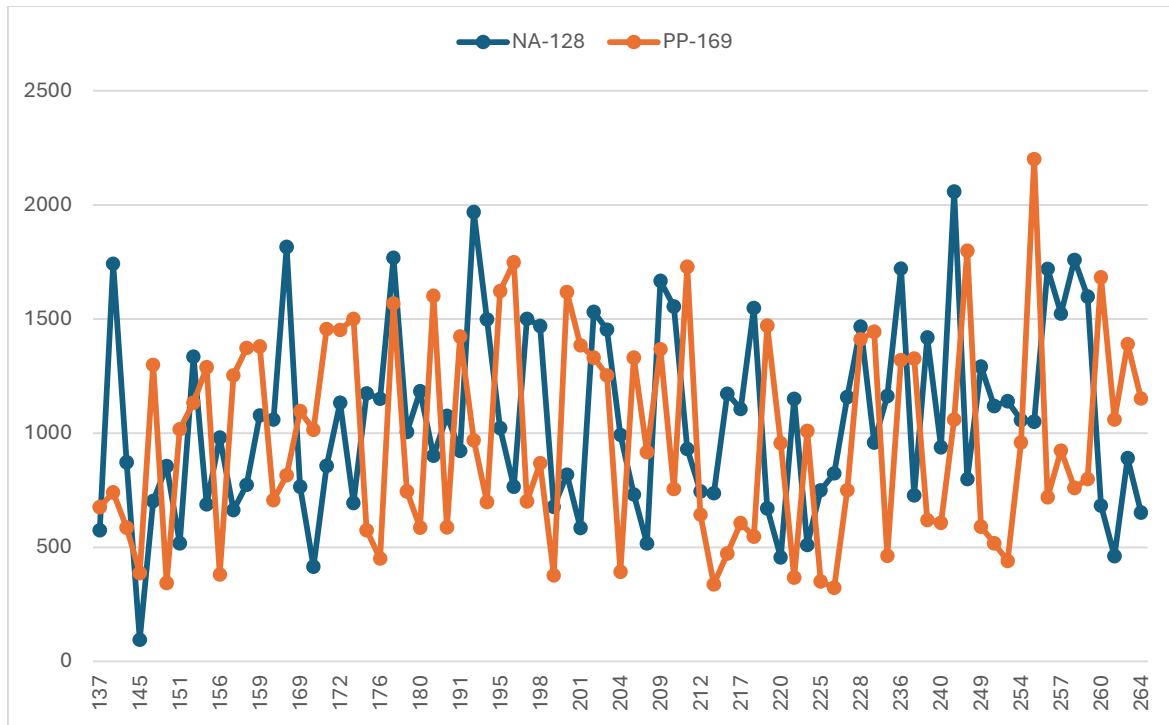
Metric	NA-128	PP-161	Difference
Registered Voters	48,788	48,788	0
Polled Votes	19,436	19,437	-1
Average Turnout	39.8%	39.8%	0.0%
Ballot Papers Used	19,439	19,236	203
Difference Between Polled Votes and Ballot Papers	3	201	-
Votes for M. Awn Saqlain	4,055	-	-
Votes for Salman Akram Raja	12,468	-	-

**Analysis of NA-128 & PP-169 Voting Patterns in Shared Polling Stations**

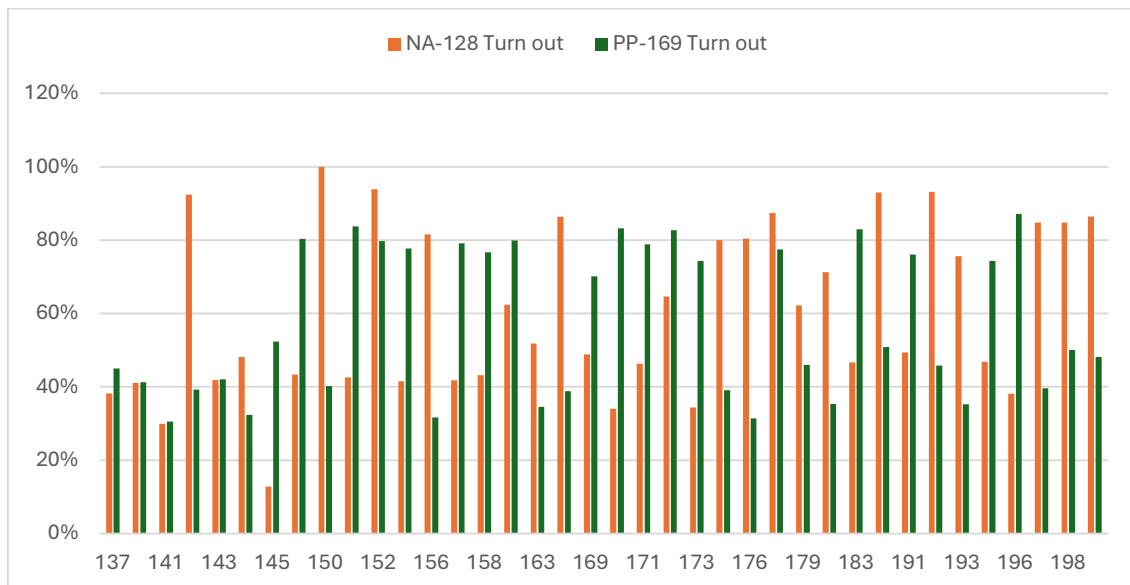
**Figure 7. Polled votes (PVs) fluctuation across polling stations between NA-128 and PP-169 Lahore**



**Figure 8. Graph showing variance in polled votes of same polling stations for NA-128 and PP-169 constituencies.**



**Figure 9. Exceptional differences in the voters' turn outs (%) in the same polling stations shared for NA -128 and PP-169**





**Table 16. Polling Stations Where NA Polled Votes Are Higher than PP (84 Shared Polling Stations)**

<b>Metric</b>	<b>NA-128</b>	<b>PP-169</b>	<b>Difference</b>
Registered Voters	135,372	135,372	0
Polled Votes	87,034	81,126	5,908
Average Turnout	64.3%	59.9%	4.4%
Ballot Papers Used (Form 46)	74,767	81,088	-6,321
Difference Between Polled Votes and Ballot Papers	12,267	-	-
Votes for Winner (M. Awn Saqlain)	45,683	-	-
Votes for Runner-Up (Salman Akram Raja)	32,602	-	-

**Table 17. Polling Stations Where NA and PP Polled Votes Are Equal (44 Shared Polling Stations)**

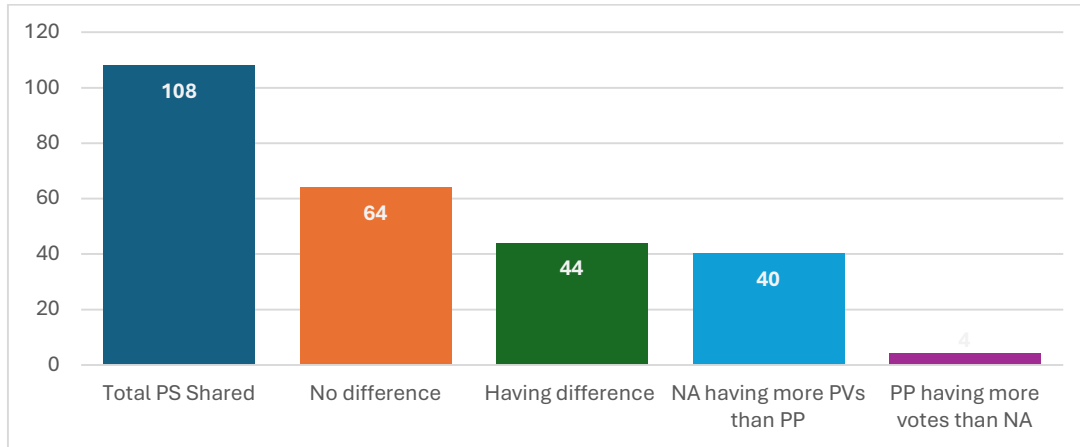
<b>Metric</b>	<b>NA-128</b>	<b>PP-169</b>	<b>Difference</b>
Registered Voters	67,694	67,694	0
Polled Votes	29,891	29,894	-3
Average Turnout	44.2%	44.2%	0.0%
Ballot Papers Used (Form 46)	29,125	30,578	-1,453
Difference Between Polled Votes and Ballot Papers	766	-	-
Votes for Winner (M. Awn Saqlain)	7,864	-	-
Votes for Runner-Up (Salman Akram Raja)	17,523	-	-

**Table 17. Summary of All Shared Polling Stations (128 Total)**

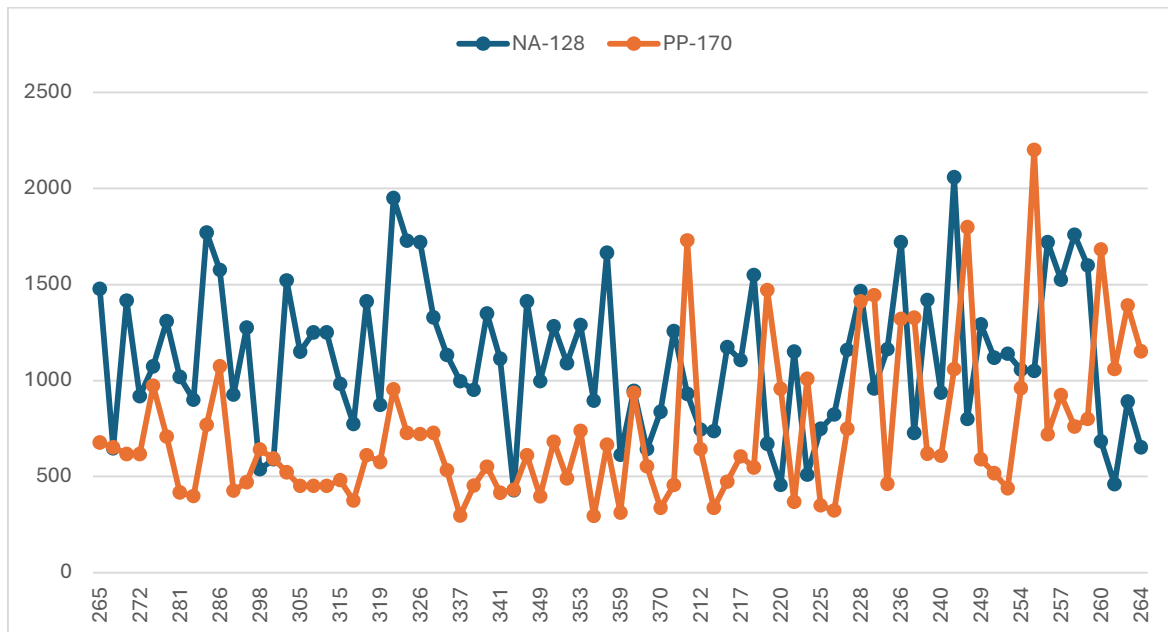
<b>Metric</b>	<b>NA-128</b>	<b>PP-169</b>	<b>Difference</b>
Registered Voters	203,066	203,066	0
Polled Votes	116,925	111,020	5,905
Average Turnout	57.6%	54.7%	2.9%
Ballot Papers Used (Form 46)	103,892	111,666	-7,774
Votes for Winner (M. Awn Saqlain)	53,547	-	-
Votes for Runner-Up (Salman Akram Raja)	50,125	-	-

## Analysis of NA-128 & PP-170 Voting Patterns in Shared Polling Stations

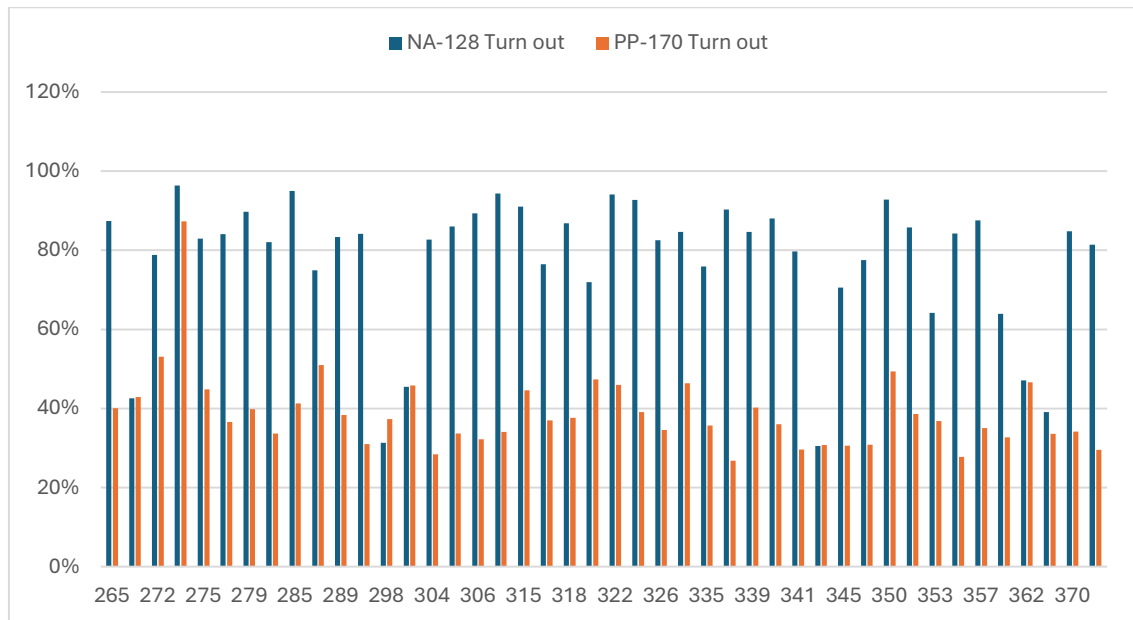
**Figure 10. Polled votes (PVs) fluctuation across polling stations between NA-128 and PP-170 Lahore**



**Figure 11. Graph showing variance in polled votes of same polling stations for NA-128 and PP-170 constituencies.**



**Figure 12. Exceptional differences in the voters' turn outs (%) in the same polling stations shared for NA -128 and PP-170**



**Table 18. Polling Stations Where NA Polled Votes Are Higher than PP (44 Shared Polling Stations)**

Metric	NA-128	PP-170	Difference
Registered Voters	65,125	65,125	0
Polled Votes	50,279	25,250	25,029
Average Turnout	77.2%	38.8%	38.4%
Ballot Papers Used (Form 46)	48,796	24,606	24,190
Difference Between Polled Votes and Ballot Papers	1,483	644	-
Votes for Winner (M. Awn Saqlain)	31,668	-	-
Votes for Runner-Up (Salman Akram Raja)	15,298	-	-

**Table 19. Polling Stations Where NA and PP Polled Votes Are Equal (64 Shared Polling Stations)**

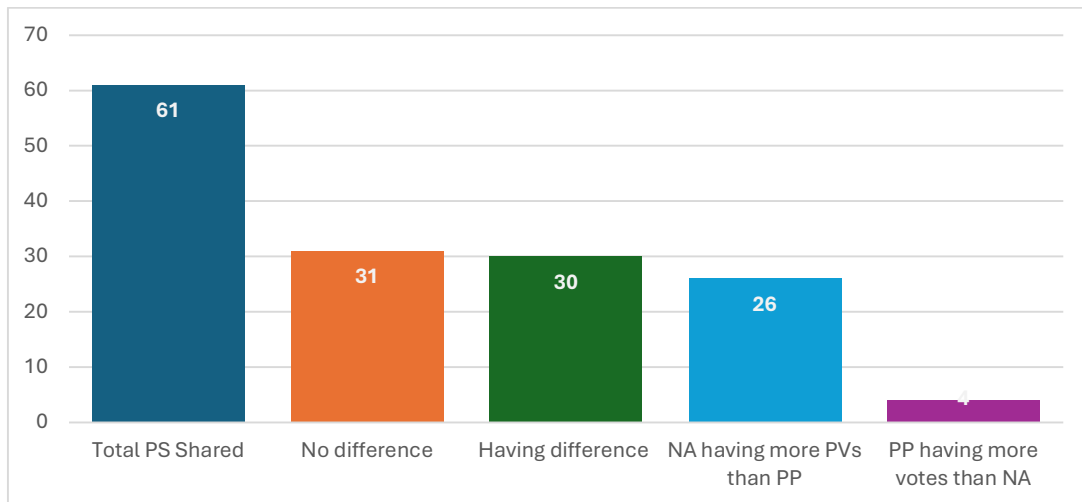
Metric	NA-128	PP-170	Difference
Registered Voters	109,092	109,092	0
Polled Votes	44,063	44,069	-6
Average Turnout	40.4%	40.4%	0.0%
Ballot Papers Used (Form 46)	44,713	44,294	419
Difference Between Polled Votes and Ballot Papers	650	225	-
Votes for Winner (M. Awn Saqlain)	14,067	-	-
Votes for Runner-Up (Salman Akram Raja)	25,295	-	-

**Table 20. Summary of All Shared Polling Stations (108 Total)**

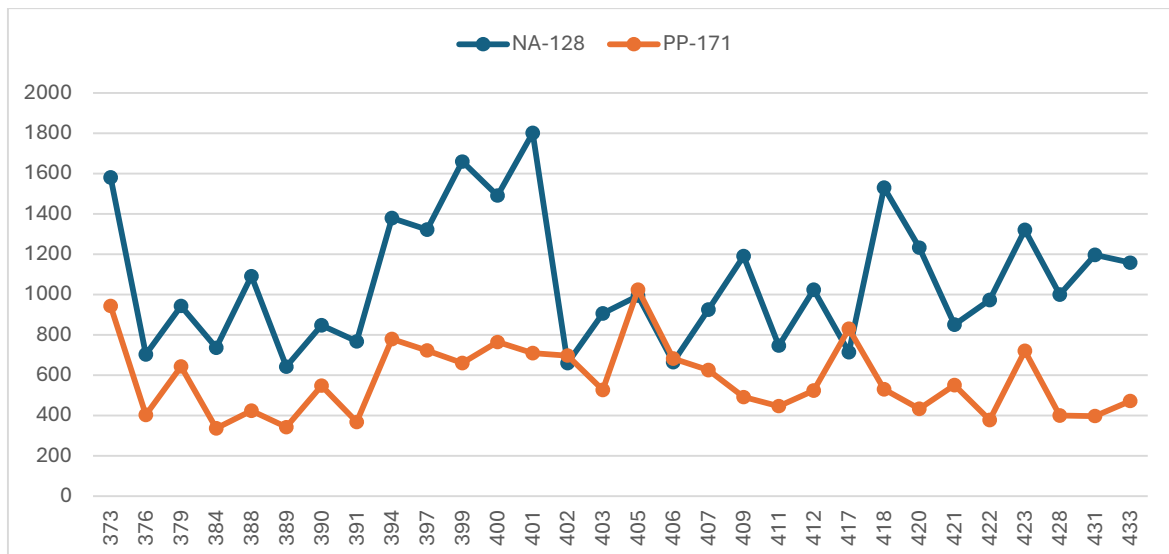
Metric	NA-128	PP-170	Difference
Registered Voters	174,217	174,217	0
Polled Votes	94,342	69,319	25,023
Average Turnout	54.2%	39.8%	14.4%
Ballot Papers Used (Form 46)	93,509	68,900	24,609
Votes for Winner (M. Awn Saqlain)	45,735	-	-
Votes for Runner-Up (Salman Akram Raja)	40,593	-	-

**Analysis of NA-128 & PP-171 Voting Patterns in Shared Polling Stations**

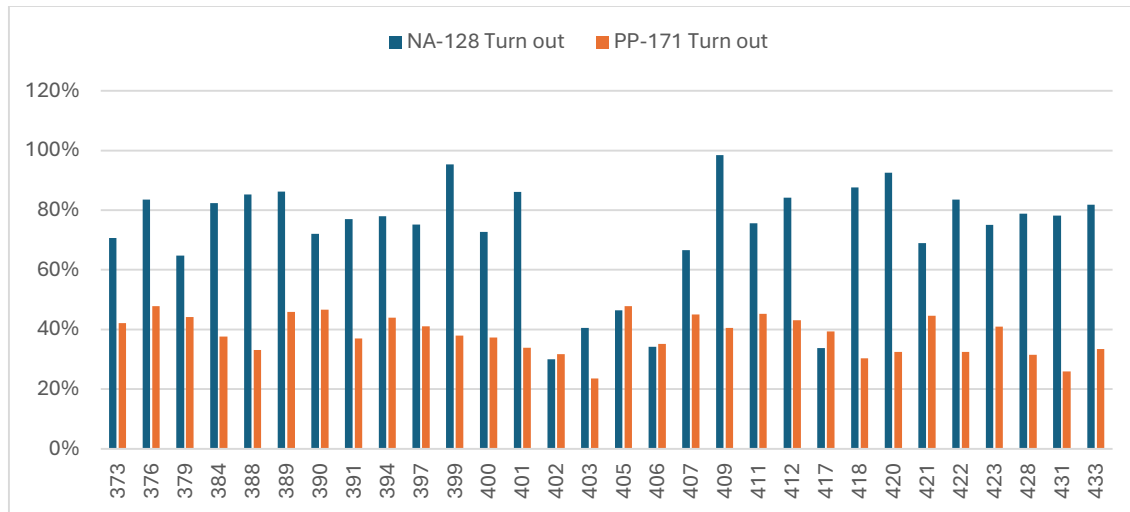
**Figure 13. Polled votes (PVs) fluctuation across polling stations between NA-128 and PP-171 Lahore**



**Figure 14. Graph showing variance in polled votes of same polling stations for NA-128 and PP-171 constituencies.**



**Figure 15. Exceptional differences in the voters' turn outs (%) in the same polling stations shared for NA -128 and PP-171**



**Table 21. Polling Stations Where NA Polled Votes Are Higher than PP (30 Shared Polling Stations)**

Metric	NA-128	PP-171	Difference
Registered Voters	45,934	45,934	0
Polled Votes	32,070	17,389	14,681
Average Turnout	69.8%	37.9%	31.9%
Ballot Papers Used (Form 46)	31,876	17,371	14,505
Difference Between Polled Votes and Ballot Papers	194	18	-
Votes for Winner (M. Awn Saqlain)	17,946	-	-
Votes for Runner-Up (Salman Akram Raja)	10,339	-	-

**Table 22. Polling Stations Where NA and PP Polled Votes Are Equal (31 Shared Polling Stations)**

Metric	NA-128	PP-171	Difference
Registered Voters	47,004	47,004	0
Polled Votes	18,137	18,137	0
Average Turnout	38.6%	38.6%	0.0%
Ballot Papers Used (Form 46)	18,144	18,148	-4
Difference Between Polled Votes and Ballot Papers	-7	11	-
Votes for Winner (M. Awn Saqlain)	4,742	-	-
Votes for Runner-Up (Salman Akram Raja)	9,407	-	-

**Table 23. Summary of All Shared Polling Stations (61 Total)**

Metric	NA-128	PP-171	Difference
Registered Voters	92,938	92,938	0
Polled Votes	50,207	35,526	14,681
Average Turnout	54.0%	38.2%	15.8%
Ballot Papers Used (Form 46)	50,020	35,519	14,501
Votes for Winner (M. Awn Saqlain)	22,688	-	-
Votes for Runner-Up (Salman Akram Raja)	19,746	-	-

**Table 24. Comparison of NA-128 and PP Polled Votes in Shared Polling Stations for PP-156, PP-161, PP-169, PP-170, and PP-171**

PP No	PP-PS #	NA-PS #	NA-128 Polled Votes	PPs Polled Votes	Difference	Registered Votes
PP-156	13	5	1205	606	599	1249
PP-156	15	7	979	575	404	1171
PP-156	108	12	979	879	100	1962
PP-156	112	16	1057	580	477	1262
PP-156	113	17	1080	480	600	1350
PP-156	115	19	1427	628	799	1748
PP-156	116	20	1167	578	589	1379
PP-156	117	21	1161	361	800	1367
PP-156	119	23	938	719	219	1501
PP-156	120	24	1850	851	999	1944
PP-156	121	25	2006	1006	1000	2376
PP-156	125	29	826	526	300	1196
PP-156	130	34	1171	298	873	1201
PP-156	131	35	1555	730	825	1798
PP-156	136	40	526	326	200	772
PP-156	139	43	745	606	139	2008
PP-156	141	45	1458	558	900	1751
PP-156	145	49	573	95	478	739
PP-156	147	51	2054	1054	1000	2252
PP-156	148	52	1822	822	1000	2208
PP-156	153	58	1497	699	798	1700
PP-156	157	60	1177	477	700	1403
PP-156	159	63	707	470	237	1246
PP-156	161	65	1451	951	500	1715
PP-161	79	69	996	443	553	1166
PP-161	80	70	1467	868	599	2141
PP-161	81	71	1808	741	1067	2039

PP-161	82	72	919	477	442	1200
PP-161	85	73	977	419	558	1192
PP-161	83	74	1888	908	980	2198
PP-161	84	75	1541	1049	492	2086
PP-161	86	77	1613	663	950	1745
PP-161	87	78	1150	550	600	1345
PP-161	91	81	1549	581	968	1573
PP-161	93	83	1210	610	600	1571
PP-161	96	86	531	716	-185	1352
PP-161	97	87	1224	524	700	1463
PP-161	98	88	1287	589	698	1387
PP-161	104	92	722	422	300	958
PP-161	105	94	1188	487	701	1319
PP-161	107	96	1516	716	800	1877
PP-161	111	99	1463	662	801	1748
PP-161	113	100	1178	524	654	1252
PP-161	112	101	1053	453	600	1259
PP-161	114	103	916	416	500	1182
PP-161	119	106	1235	535	700	1555
PP-161	121	107	1326	726	600	1537
PP-161	124	109	973	473	500	1224
PP-161	127	111	1414	814	600	1801
PP-161	130	113	991	533	458	1152
PP-161	131	114	933	433	500	1083
PP-161	147	122	1259	659	600	1645
PP-161	148	123	1546	548	998	1731
PP-161	154	129	1709	708	1001	1849
PP-161	157	132	1495	595	900	1654
PP-161	160	135	1418	818	600	1846
PP-161	161	136	1973	689	1284	2075
PP-169	1	137	574	676	-102	1500
PP-169	6	142	1742	740	1002	1885
PP-169	8	144	873	587	286	1812
PP-169	9	145	95	387	-292	739
PP-169	10	147	702	1300	-598	1617
PP-169	13	150	855	344	511	855
PP-169	16	151	518	1018	-500	1216
PP-169	15	152	1335	1134	201	1422
PP-169	17	153	688	1289	-601	1658

PP-169	20	156	981	381	600	1202
PP-169	21	157	663	1254	-591	1584
PP-169	22	158	774	1374	-600	1792
PP-169	23	159	1078	1380	-302	1728
PP-169	27	163	1059	706	353	2043
PP-169	28	164	1816	816	1000	2102
PP-169	33	169	765	1097	-332	1564
PP-169	34	170	415	1015	-600	1219
PP-169	35	171	856	1457	-601	1847
PP-169	36	172	1133	1452	-319	1754
PP-169	37	173	694	1501	-807	2020
PP-169	39	175	1174	574	600	1466
PP-169	40	176	1150	450	700	1430
PP-169	42	178	1769	1568	201	2023
PP-169	43	179	1006	745	261	1618
PP-169	44	180	1184	587	597	1661
PP-169	47	183	901	1601	-700	1930
PP-169	50	186	1075	588	487	1156
PP-169	55	191	923	1423	-500	1870
PP-169	56	192	1969	969	1000	2113
PP-169	57	193	1499	699	800	1983
PP-169	59	195	1023	1623	-600	2185
PP-169	60	196	766	1749	-983	2007
PP-169	61	197	1501	701	800	1770
PP-169	62	198	1469	868	601	1732
PP-169	63	199	677	377	300	783
PP-169	64	200	818	1618	-800	1910
PP-169	65	201	585	1385	-800	1700
PP-169	66	202	1532	1331	201	1691
PP-169	67	203	1454	1254	200	1546
PP-169	68	204	993	392	601	1088
PP-169	71	207	732	1331	-599	1567
PP-169	72	208	516	917	-401	1311
PP-169	73	209	1668	1368	300	1907
PP-169	74	210	1555	755	800	2141
PP-169	75	211	931	1730	-799	2266
PP-169	76	212	745	643	102	2105
PP-169	77	213	737	337	400	844
PP-169	79	215	1173	473	700	1545



PP-169	81	217	1106	606	500	1392
PP-169	83	218	1549	547	1002	1811
PP-169	82	219	671	1471	-800	1802
PP-169	84	220	456	957	-501	1251
PP-169	85	221	1151	368	783	1170
PP-169	86	223	510	1010	-500	1176
PP-169	89	225	750	350	400	854
PP-169	90	226	823	323	500	955
PP-169	91	227	1159	750	409	1767
PP-169	94	230	959	1445	-486	1762
PP-169	96	232	1162	462	700	1376
PP-169	100	236	1721	1321	400	1875
PP-169	101	237	727	1327	-600	1722
PP-169	102	238	1419	619	800	1778
PP-169	104	240	938	608	330	1313
PP-169	105	241	2059	1059	1000	2125
PP-169	106	242	799	1799	-1000	1940
PP-169	113	249	1292	590	702	1465
PP-169	114	250	1119	518	601	1278
PP-169	115	251	1140	440	700	1302
PP-169	119	255	1050	2201	-1151	2302
PP-169	120	256	1720	720	1000	1811
PP-169	121	257	1524	924	600	1848
PP-169	122	258	1760	760	1000	1831
PP-169	123	259	1599	799	800	1851
PP-169	124	260	683	1683	-1000	1854
PP-169	126	262	461	1060	-599	1313
PP-169	127	263	891	1391	-500	1591
PP-169	128	264	652	1152	-500	1390
PP-170	78	265	1478	678	800	1691
PP-170	88	272	918	618	300	1164
PP-170	89	273	1073	973	100	1114
PP-170	91	275	1308	708	600	1577
PP-170	84	277	1417	617	800	1685
PP-170	95	279	899	399	500	1002
PP-170	92	281	1018	418	600	1240
PP-170	98	285	1770	770	1000	1863
PP-170	99	286	1576	1074	502	2104
PP-170	102	289	927	427	500	1112

PP-170	110	297	1275	470	805	1515
PP-170	111	298	538	641	-103	1716
PP-170	118	304	1521	523	998	1838
PP-170	119	305	1151	451	700	1338
PP-170	120	306	1251	451	800	1400
PP-170	128	314	1251	451	800	1325
PP-170	129	315	982	482	500	1079
PP-170	130	316	775	375	400	1013
PP-170	132	318	1412	612	800	1626
PP-170	133	319	873	575	298	1214
PP-170	135	322	1951	954	997	2072
PP-170	136	323	1728	728	1000	1863
PP-170	139	326	1721	721	1000	2085
PP-170	147	334	1328	728	600	1569
PP-170	148	335	1133	533	600	1492
PP-170	150	337	996	296	700	1102
PP-170	152	339	952	453	499	1125
PP-170	153	340	1349	552	797	1532
PP-170	154	341	1115	415	700	1399
PP-170	158	345	1411	612	799	2000
PP-170	162	349	997	397	600	1285
PP-170	163	350	1282	682	600	1381
PP-170	164	351	1091	491	600	1272
PP-170	166	353	1289	739	550	2007
PP-170	168	355	895	295	600	1062
PP-170	170	357	1666	667	999	1903
PP-170	172	359	613	313	300	958
PP-170	183	370	837	337	500	987
PP-170	185	372	1257	457	800	1543
PP-171	142	373	1581	944	637	2237
PP-171	145	376	703	403	300	842
PP-171	148	379	944	644	300	1457
PP-171	153	384	737	337	400	895
PP-171	157	388	1091	424	667	1280
PP-171	158	389	643	342	301	745
PP-171	159	390	849	549	300	1178
PP-171	160	391	768	368	400	997
PP-171	163	394	1379	779	600	1769
PP-171	166	397	1323	723	600	1759

PP-171	168	399	1661	661	1000	1743
PP-171	169	400	1491	765	726	2050
PP-171	170	401	1802	710	1092	2091
PP-171	172	403	907	528	379	2233
PP-171	176	407	926	626	300	1390
PP-171	178	409	1191	491	700	1209
PP-171	180	411	747	447	300	989
PP-171	181	412	1025	525	500	1218
PP-171	185	417	714	831	-117	2112
PP-171	186	418	1531	531	1000	1747
PP-171	188	420	1233	433	800	1333
PP-171	190	421	852	552	300	1237
PP-171	191	422	973	379	594	1165
PP-171	192	423	1322	722	600	1760
PP-171	195	428	1001	401	600	1271
PP-171	197	431	1197	397	800	1530
PP-171	199	433	1159	473	686	1416

**Table 23. Comparison of Turnout Percentages between National Assembly (NA) and Provincial Assembly (PP) Elections at Shared Polling Stations**

PP No	PP-PS #	NA-PS #	NA-128 Turnout	5/PPs Turnout
PP-156	13	5	96%	49%
PP-156	15	7	84%	49%
PP-156	108	12	50%	45%
PP-156	112	16	84%	46%
PP-156	113	17	80%	36%
PP-156	115	19	82%	36%
PP-156	116	20	85%	42%
PP-156	117	21	85%	26%
PP-156	119	23	62%	48%
PP-156	120	24	95%	44%
PP-156	121	25	84%	42%
PP-156	125	29	69%	44%
PP-156	130	34	98%	25%
PP-156	131	35	86%	41%
PP-156	136	40	68%	42%
PP-156	139	43	37%	30%
PP-156	141	45	83%	32%
PP-156	145	49	78%	13%
PP-156	147	51	91%	47%

PP-156	148	52	83%	37%
PP-156	153	58	88%	41%
PP-156	157	60	84%	34%
PP-156	159	63	57%	38%
PP-156	161	65	85%	55%
PP-161	79	69	85%	38%
PP-161	80	70	69%	41%
PP-161	81	71	89%	36%
PP-161	82	72	77%	40%
PP-161	85	73	82%	35%
PP-161	83	74	86%	41%
PP-161	84	75	74%	50%
PP-161	86	77	92%	38%
PP-161	87	78	86%	41%
PP-161	91	81	98%	37%
PP-161	93	83	77%	39%
PP-161	96	86	39%	53%
PP-161	97	87	84%	36%
PP-161	98	88	93%	42%
PP-161	104	92	75%	44%
PP-161	105	94	90%	37%
PP-161	107	96	81%	38%
PP-161	111	99	84%	38%
PP-161	113	100	94%	42%
PP-161	112	101	84%	36%
PP-161	114	103	77%	35%
PP-161	119	106	79%	34%
PP-161	121	107	86%	47%
PP-161	124	109	79%	39%
PP-161	127	111	79%	45%
PP-161	130	113	86%	46%
PP-161	131	114	86%	40%
PP-161	147	122	77%	40%
PP-161	148	123	89%	32%
PP-161	154	129	92%	38%
PP-161	157	132	90%	36%
PP-161	160	135	77%	44%
PP-161	161	136	95%	33%
PP-169	1	137	38%	45%
PP-169	6	142	92%	39%
PP-169	8	144	48%	32%

PP-169	9	145	13%	52%
PP-169	10	147	43%	80%
PP-169	13	150	100%	40%
PP-169	16	151	43%	84%
PP-169	15	152	94%	80%
PP-169	17	153	41%	78%
PP-169	20	156	82%	32%
PP-169	21	157	42%	79%
PP-169	22	158	43%	77%
PP-169	23	159	62%	80%
PP-169	27	163	52%	35%
PP-169	28	164	86%	39%
PP-169	33	169	49%	70%
PP-169	34	170	34%	83%
PP-169	35	171	46%	79%
PP-169	36	172	65%	83%
PP-169	37	173	34%	74%
PP-169	39	175	80%	39%
PP-169	40	176	80%	31%
PP-169	42	178	87%	78%
PP-169	43	179	62%	46%
PP-169	44	180	71%	35%
PP-169	47	183	47%	83%
PP-169	50	186	93%	51%
PP-169	55	191	49%	76%
PP-169	56	192	93%	46%
PP-169	57	193	76%	35%
PP-169	59	195	47%	74%
PP-169	60	196	38%	87%
PP-169	61	197	85%	40%
PP-169	62	198	85%	50%
PP-169	63	199	86%	48%
PP-169	64	200	43%	85%
PP-169	65	201	34%	81%
PP-169	66	202	91%	79%
PP-169	67	203	94%	81%
PP-169	68	204	91%	36%
PP-169	71	207	47%	85%
PP-169	72	208	39%	70%
PP-169	73	209	87%	72%
PP-169	74	210	73%	35%

PP-169	75	211	41%	76%
PP-169	76	212	35%	31%
PP-169	77	213	87%	40%
PP-169	79	215	76%	31%
PP-169	81	217	79%	44%
PP-169	83	218	86%	30%
PP-169	82	219	37%	82%
PP-169	84	220	36%	76%
PP-169	85	221	98%	31%
PP-169	86	223	43%	86%
PP-169	89	225	88%	41%
PP-169	90	226	86%	34%
PP-169	91	227	66%	42%
PP-169	94	230	54%	82%
PP-169	96	232	84%	34%
PP-169	100	236	92%	70%
PP-169	101	237	42%	77%
PP-169	102	238	80%	35%
PP-169	104	240	71%	46%
PP-169	105	241	97%	50%
PP-169	106	242	41%	93%
PP-169	113	249	88%	40%
PP-169	114	250	88%	41%
PP-169	115	251	88%	34%
PP-169	119	255	46%	96%
PP-169	120	256	95%	40%
PP-169	121	257	82%	50%
PP-169	122	258	96%	42%
PP-169	123	259	86%	43%
PP-169	124	260	37%	91%
PP-169	126	262	35%	81%
PP-169	127	263	56%	87%
PP-169	128	264	47%	83%
PP-170	78	265	87%	40%
PP-170	88	272	79%	53%
PP-170	89	273	96%	87%
PP-170	91	275	83%	45%
PP-170	84	277	84%	37%
PP-170	95	279	90%	40%
PP-170	92	281	82%	34%
PP-170	98	285	95%	41%

PP-170	99	286	75%	51%
PP-170	102	289	83%	38%
PP-170	110	297	84%	31%
PP-170	111	298	31%	37%
PP-170	118	304	83%	28%
PP-170	119	305	86%	34%
PP-170	120	306	89%	32%
PP-170	128	314	94%	34%
PP-170	129	315	91%	45%
PP-170	130	316	77%	37%
PP-170	132	318	87%	38%
PP-170	133	319	72%	47%
PP-170	135	322	94%	46%
PP-170	136	323	93%	39%
PP-170	139	326	83%	35%
PP-170	147	334	85%	46%
PP-170	148	335	76%	36%
PP-170	150	337	90%	27%
PP-170	152	339	85%	40%
PP-170	153	340	88%	36%
PP-170	154	341	80%	30%
PP-170	158	345	71%	31%
PP-170	162	349	78%	31%
PP-170	163	350	93%	49%
PP-170	164	351	86%	39%
PP-170	166	353	64%	37%
PP-170	168	355	84%	28%
PP-170	170	357	88%	35%
PP-170	172	359	64%	33%
PP-170	183	370	85%	34%
PP-170	185	372	81%	30%
PP-171	142	373	71%	42%
PP-171	145	376	83%	48%
PP-171	148	379	65%	44%
PP-171	153	384	82%	38%
PP-171	157	388	85%	33%
PP-171	158	389	86%	46%
PP-171	159	390	72%	47%
PP-171	160	391	77%	37%
PP-171	163	394	78%	44%
PP-171	166	397	75%	41%

PP-171	168	399	95%	38%
PP-171	169	400	73%	37%
PP-171	170	401	86%	34%
PP-171	172	403	41%	24%
PP-171	176	407	67%	45%
PP-171	178	409	99%	41%
PP-171	180	411	76%	45%
PP-171	181	412	84%	43%
PP-171	185	417	34%	39%
PP-171	186	418	88%	30%
PP-171	188	420	92%	32%
PP-171	190	421	69%	45%
PP-171	191	422	84%	33%
PP-171	192	423	75%	41%
PP-171	195	428	79%	32%
PP-171	197	431	78%	26%
PP-171	199	433	82%	33%